

General Library Information



Reference Division
Watson Memorial Library
Northwestern State University
Natchitoches LA 71497

February 2007

NSU Libraries are committed to providing quality library service to all Northwestern State University students.

Hours

Main Campus Library Hours (Fall and Spring Terms)

Monday - Thursday	8:00am – 11:00pm
Friday	8:00am – 5:00pm
Saturday	10:00am – 5:00pm
Sunday	2:00pm – 10:00pm

Holiday hours vary, call 357-4477 for confirmation

Contacts

Toll Free	888.540.9687
<i>charges apply if you call outside of Louisiana</i>	
Reference	318.357.4574
Circulation	318.357.4477
Interlibrary Loan	318-357-5465
Media/Serials	318.357.4406
Cammie G. Henry Research Center	318.357.4585

Web Page

The library web page contains in-depth information about library departments and services. Check it out at http://www.nsula.edu/watson_library. Also check the web page for announcements regarding changes in hours, updates on library policies, and additional services.

-continued on reverse-

Circulation

Students with valid Speed Demon cards may check out books from NSU Libraries. Books may be checked out for 21 days and renewed once if they are not overdue. Fines are \$.50 per day per book; the replacement cost for lost items is \$60.00 per item in addition to accrued fines.

Photocopying

The photocopiers in the library do not accept loose change, so be sure you have a valid Speed Demon card. You will be able to add value to your Speed Demon card by using a machine located to the right of the circulation desk. The machine accepts \$1.00 and \$5.00 bills. Photocopies are ten cents each.

Interlibrary Loan

Any currently registered student may use the Interlibrary Loan service to receive books and photocopies of articles not owned by NSU Libraries **free of charge**. Go to the library homepage and select "Interlibrary Loan." If you are a first-time user, you will need to establish a user profile. Be sure to note your user name and password for future use.

Electronic Resources

NSU Libraries offer access to more than 70 electronic databases covering a wide range of subject areas, with many of the databases containing journal articles and other documents in full text. All are available to off-campus users who are NSU faculty, staff, or students. To access these databases, you will need to know your MyNSU username and password. Go to: <http://my.nsula.edu> to set up your account.

Research Consultations

Any student may schedule a research consultation with a reference librarian by contacting the Reference department in person or by telephone. Save yourself time and effort by calling the reference desk prior to beginning work on a thesis, dissertation or other large research project.

Writing Center Outpost

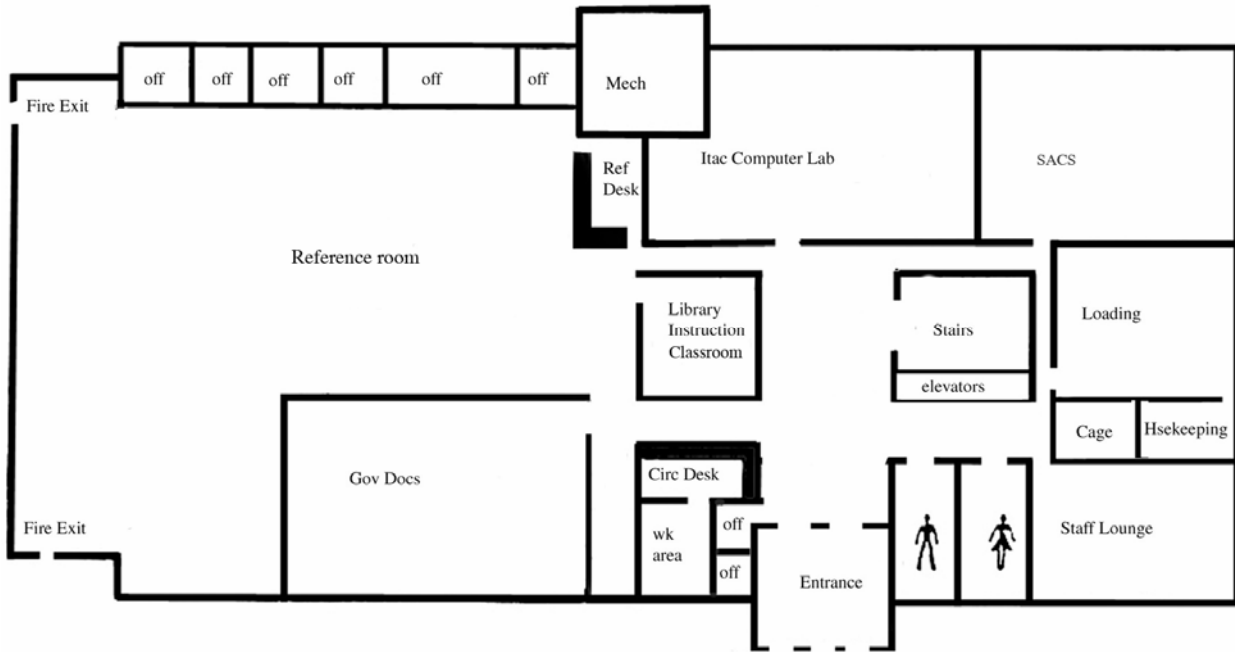
The Writing Center Outpost is located on the first floor of the Watson Library. It is staffed by graduate students from the English department who will teach you how to properly write and cite your term papers. The Outpost is open from 5 p.m. to 9 p.m. Monday-Wednesday during the Fall and Spring semesters.

Student/Faculty Reading Room

The Reading Room is located on the second floor of the library. It has comfortable seating, computer terminals, and books recently purchased by the library. It is open for group study and university-supported student meetings.

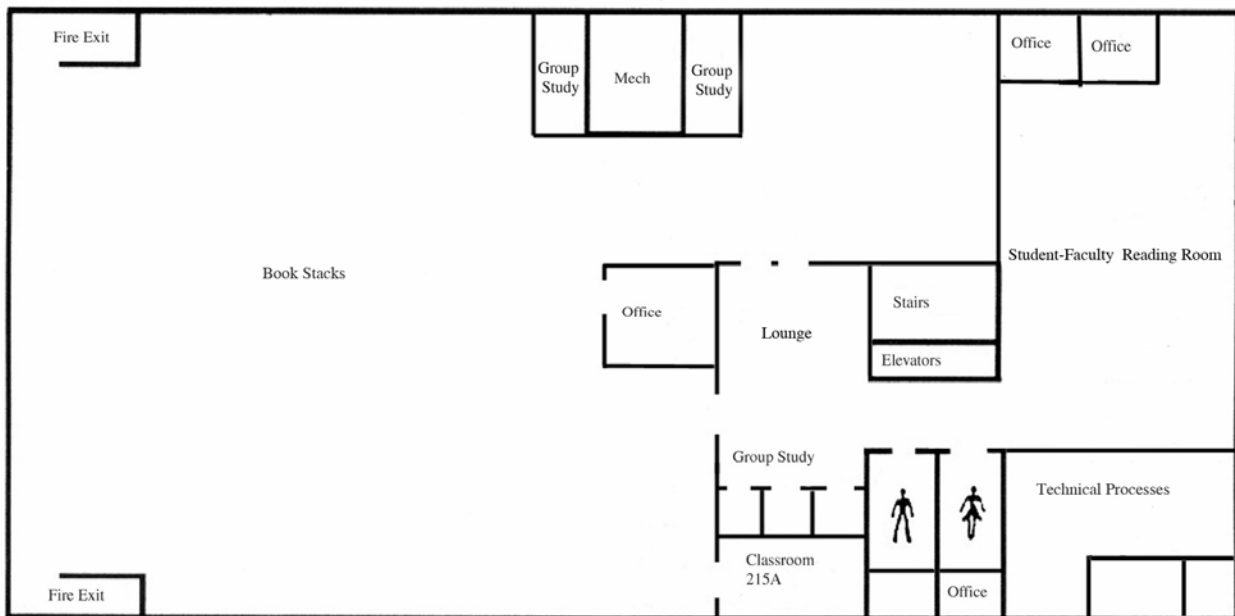
FIRST FLOOR

Here you will find government documents, reference, circulation, a library instruction lab, a computer lab, and the paperbacks reading area, located in the lobby. The reading room contains current bestsellers in fiction and non-fiction.



SECOND FLOOR

Here you will find books and bound journals with call numbers in the A-Z range, the student/faculty reading room, and the interlibrary loan and technical processes offices



-continued on reverse-

THIRD FLOOR

Here you will find the Serials/Media Division, the Cammie G. Henry Research Center, and the library administrative offices.

